
Quarterly Benefit Statistics

U.S. Railroad Retirement Board
844 North Rush Street
Chicago, Illinois 60611-1275
www.rrb.gov

*Published by Public Affairs
and the Bureau of the Actuary and Research*

March 6, 2021

Railroad Retirement and Unemployment Insurance Programs Selected Current Statistics for July - September 2020

List of Tables:

Table 1 - Retirement and Survivor Programs, Benefit Statistics
Table 2 - Retirement and Survivor Programs, Financial Statistics
Table 3 - Unemployment and Sickness Programs, Benefit Statistics
Table 4 - Benefits and Beneficiaries

Total Monthly Railroad Retirement Beneficiaries, September 2010 through September 2020

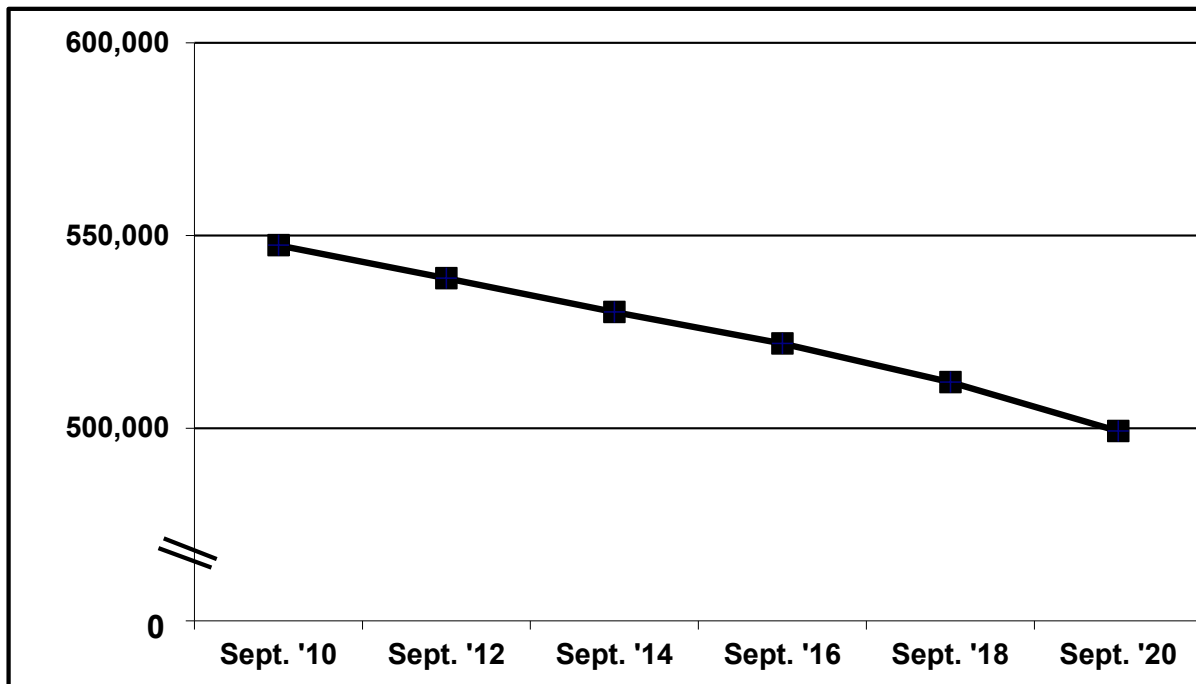


Table 1: Retirement and Survivor Programs, Benefit Statistics
July - September 2020

Period	Employee annuities							
	Total ¹		Age		Disability	Supple- mental ³	Spouse annuities	Divorced spouse annuities
	Monthly benefits	Monthly beneficiaries	Awarded age annuity	Disability converted to age annuity ²				
Number in current-payment status at end of period								
September 2020	622,932	499,222	186,357	49,278	19,996	114,444	142,197	5,215
August 2020	623,563	499,626	186,505	49,235	20,162	114,661	142,077	5,224
July 2020	624,075	499,934	186,363	49,195	20,402	114,864	142,162	5,237
Average amount in current-payment status at end of period								
September 2020	\$2,984.53	\$2,625.20	\$2,871.45	\$41.51	\$1,101.97	\$705.40
August 2020	2,980.91	2,622.87	2,869.26	41.51	1,100.86	703.52
July 2020	2,977.20	2,620.62	2,868.52	41.51	1,099.80	702.17
Number awarded during period								
September 2020	2,545	2,292	671	166	253	824	48
August 2020	2,562	2,275	870	138	287	684	42
July 2020	2,285	2,054	687	171	231	674	38
10/19 - 9/20	26,511	24,130	7,248	1,686	2,381	8,155	602
10/18 - 9/19	29,023	25,724	7,727	1,717	3,299	9,056	752
Average amount awarded during period ⁴								
September 2020	\$3,311.48	\$2,917.13	\$40.50	\$1,090.70	\$758.15
August 2020	3,359.18	2,919.00	41.63	1,155.11	794.69
July 2020	3,374.61	2,915.95	42.18	1,188.19	778.43
Benefit payments during period (thousands) ⁵								
September 2020	\$1,096,457	\$557,453	\$128,807	\$65,190	\$4,765	\$157,820	\$3,806
August 2020	1,094,691	557,328	128,646	64,475	4,775	157,425	3,783
July 2020	1,095,100	555,987	128,309	66,345	4,783	157,814	3,826
10/19 - 9/20	13,115,287	6,657,362	1,522,939	806,982	57,932	1,884,324	45,854
10/18 - 9/19	12,969,539	6,549,123	1,451,597	884,401	59,424	1,847,983	44,320

¹Includes dependent parents' annuities. Except for benefit payment data, excludes insurance lump-sum and residual payment figures. Total benefit payments also include hospital insurance benefits for services in Canada. ²A disability annuity ends when the retiree attains full retirement age, at which time the annuity converts to an age and service annuity. Consequently, these annuitants are receiving age and service annuities. Full retirement age gradually increases, from age 65 to 67, for those born between 1937 and 1960. It is age 67 for those born after 1959 and age 65 for those born before 1938. ³Excludes partition payments to spouses and divorced spouses where the employee is deceased. Averages are after court-ordered partitions. ⁴Regular employee and spouse annuity averages are preliminary estimates. ⁵Beginning in July 2019, data is from the Monthly Treasury Statement. Prior to July 2019, data was provided by the Bureau of Fiscal Operations.

NOTE.—MONTHLY BENEFITS in CURRENT-PAYMENT STATUS at the end of month include all benefits awarded to date and payable for the month. BENEFITS AWARDED consist of those certified for the first time on either a partial or final basis. BENEFIT PAYMENTS for a month, shown in both the benefit and financial statistics, consist of recurrent monthly checks dated the first of the month, plus retroactive and lump-sum payments made during the month, less returned checks (excluding those not yet distributed by Account), refunds of benefits paid previously, etc.

Table 1: Retirement and Survivor Programs, Benefit Statistics
July - September 2020 -- Continued

Survivor benefits									
Period	Annuities					Children	Insurance lump sums	Residual payments	Partition payments ⁷
	Aged widows and widowers	Disabled widows and widowers ⁶	Widowed mothers and fathers	Remarried widows and widowers	Divorced widows and widowers				
Number in current-payment status at end of period									
September 2020	79,406	3,176	570	2,566	9,746	7,726	2,240
August 2020	79,616	3,179	567	2,580	9,765	7,742	2,235
July 2020	79,791	3,183	561	2,598	9,748	7,750	2,206
Average amount in current-payment status at end of period									
September 2020	\$1,839.76	\$1,437.37	\$1,992.02	\$1,191.71	\$1,202.93	\$1,194.61	\$323.57
August 2020	1,835.27	1,435.82	1,977.26	1,191.85	1,200.53	1,191.61	324.39
July 2020	1,830.45	1,434.02	1,970.83	1,188.61	1,199.29	1,188.72	324.42
Number awarded during period									
September 2020	456	8	10	9	57	43	127	----
August 2020	424	11	8	9	54	35	137	----
July 2020	388	7	6	2	53	28	144	----
10/19 - 9/20	5,154	85	90	78	654	378	1,822	2
10/18 - 9/19	5,039	98	87	107	747	393	2,132	3
Average amount awarded during period ⁴									
September 2020	\$2,300.99	\$1,554.83	\$1,779.27	\$1,269.56	\$1,287.60	\$1,543.75	\$881	----
August 2020	2,352.66	1,779.68	1,591.93	1,097.89	1,351.00	1,464.47	914	----
July 2020	2,305.29	1,411.46	2,181.04	1,248.00	1,313.94	1,447.70	899	----
Benefit payments during period (thousands) ⁵									
September 2020	\$146,838	\$4,771	\$1,233	\$3,091	\$11,774	\$10,052	\$114	----	\$729
August 2020	146,758	4,890	1,167	3,102	11,738	9,707	159	----	725
July 2020	146,517	4,741	1,161	3,101	11,847	9,806	137	----	712
10/19 - 9/20	1,760,460	57,670	13,786	37,800	140,331	119,337	1,769	\$1	8,523
10/18 - 9/19	1,757,094	58,061	14,405	38,956	136,230	117,878	2,056	6	7,739

⁶Number and average in current-payment status, and benefit payments during period, includes annuities to disabled widow(er)s age 60 and over now payable as aged widow(er)s' annuities. ⁷Limited to partition payments to spouses and divorced spouses where the employee is deceased or not otherwise entitled to an annuity. Partition payments from employees on the rolls are included with the employees' annuities.

NOTE.--(Continued from previous page.)

FOR WIDOWS and WIDOWERS aged 60 and over and WIDOWED MOTHERS and FATHERS, the number of benefits being paid and benefit payments include benefits temporarily being continued at spouse annuity rates, pending award of survivor annuities.

INSURANCE LUMP SUMS and RESIDUAL PAYMENTS are each counted only once with respect to an employee's death even though divided among 2 or more persons. Award data for insurance lump sums exclude deferred benefits, i.e., those payable a year after the employee's death.

Data on benefit payments are for CALENDAR MONTHS; all other data are for ACCOUNTING MONTHS ending on approximately the 29th of each month.

Table 2: Retirement and Survivor Programs, Financial Statistics
July - September 2020 (In thousands)
Cash Basis

Item	September 2020	August 2020	July 2020	October 2019 - September 2020	October 2018 - September 2019
SOCIAL SECURITY EQUIVALENT BENEFIT ACCOUNT					
Income					
Payroll taxes ¹	\$169,649	\$157,723	\$154,067	\$2,310,991	\$2,869,773
Income tax transfers ²	72,000	283,000	260,000
Financial interchange advances ³	481,693	413,475	469,678	4,793,023	4,306,373
RRB-SSA financial interchange transfer	4,987,747	4,946,429
Interest on investments ⁴	1,171	1,681	1,287	-9,352	23,449
Outgo					
Benefit payments	\$626,975	\$626,591	\$626,462	\$7,509,808	\$7,403,816
Repayment of financial interchange advances ³	4,458,194	4,202,365
RRB-CMS financial interchange transfer	606,449	570,285
Transfer to Railroad Retirement Account ⁵	-83,000	-83,000	191,000
Administrative expenses ⁶	1,909	1,909	1,909	26,979	30,702
Funding for Office of Inspector General	185	185	185	2,388	2,715
RAILROAD RETIREMENT ACCOUNT					
Income					
Payroll taxes ¹	\$211,039	\$197,031	\$195,146	\$2,716,955	\$3,259,367
Income tax transfers ²	101,000	403,000	471,000
Reimbursements for payment of SSA benefits	167,193	167,305	166,343	1,982,327	1,896,750
Transfers from National RR Investment Trust ⁵	273,000	438,000	2,280,000	1,794,000
Transfer from SSEB Account ⁵	-83,000	-83,000	191,000
Interest on investments ⁴	672	1,252	869	-18,616	11,031
Outgo					
Benefit payments	\$468,419	\$467,020	\$467,538	\$5,591,512	\$5,548,166
Payments of SSA benefits	167,111	167,324	166,283	1,981,278	1,894,437
Loans to Railroad Unemployment Insurance Account	22,000	22,000
Administrative expenses ⁶	5,751	5,751	5,751	81,218	77,261
Funding for Office of Inspector General	558	558	558	7,202	6,824
NATIONAL RAILROAD RETIREMENT INVESTMENT TRUST					
Cash and investment balance at end of period⁷	\$24,468,552	\$25,184,709	\$24,232,453	\$24,468,552	\$25,332,403
DUAL BENEFITS PAYMENTS ACCOUNT ⁸					
Vested dual benefit payments	\$1,063	\$1,081	\$1,100	\$13,967	\$17,147

¹Net of U.S. Treasury adjustments for payroll tax refunds to certain carriers and their employees for prior periods. ²Amounts include U.S. Treasury adjustments for prior period income tax reconciliations. ³Includes interest. ⁴Net of adjustments for payroll tax refunds (see note 1). ⁵Under the Railroad Retirement and Survivors' Improvement Act of 2001, as amended, the portion of the RR Account not needed to pay current administrative expenses is to be transferred to the National Railroad Retirement Investment Trust (Trust). The Trust may transfer funds back to the RR Account for payment of benefits. The balance of the SSEB Account not needed to pay current benefits and administrative expenses is to be transferred to the Trust or to the RR Account. ⁶Prior to fiscal year 2019, reflects adjustments for prior periods. ⁷Source: National Railroad Retirement Investment Trust. ⁸Total vested dual benefits paid during a fiscal year are limited to the amount appropriated to the Dual Benefits Payments Account for that year. Any amounts not spent are returned to the U.S. Treasury. The benefit appropriation, including income tax transfers, for fiscal years 2019 and 2020 was \$19.0 and \$16.0 million, respectively.

NOTE.--This Table has been revised to only include information from the Monthly Treasury Statements and other resources within the Railroad Retirement Board's Bureau of the Actuary and Research.

**Table 3: Unemployment and Sickness Programs, Benefit Statistics
July - September 2020**

Period	Normal benefit accounts			Beneficiaries		
	Applications received	Opened	Exhausted	Total	Normal benefits	Extended benefits
Unemployment						
September 2020	1,769	1,397	2	9,483	9,306	179
August 2020	2,001	3,385	19	10,696	10,396	312
July 2020	9,403	8,923	347	13,728	13,369	427
7/20 - 9/20	13,173	13,705	368	16,697	16,339	478
7/19 - 9/19	5,970	4,052	100	4,584	4,467	259
Sickness						
September 2020	2,272	1,528	14	5,526	5,350	257
August 2020	3,545	2,458	58	5,208	4,879	426
July 2020	5,451	2,438	209	4,673	4,236	611
7/20 - 9/20	11,268	6,424	281	8,423	8,207	702
7/19 - 9/19	8,159	5,783	236	6,424	6,229	568

Period	Number of payments			Averages ¹		Benefit payments ² (thousands)
	Total	Normal benefits	Extended benefits	Benefit days	Benefit per week ²	
Unemployment						
September 2020	19,496	19,147	349	8.9	\$376.35	\$13,474
August 2020	20,843	20,253	590	7.3	381.55	14,159
July 2020	28,203	27,299	904	8.6	371.80	18,372
7/20 - 9/20	68,542	66,699	1,843	8.2	376.60	46,005
7/19 - 9/19	16,101	15,107	994	8.9	361.90	12,299
Sickness						
September 2020	12,095	11,539	556	8.1	\$374.95	\$7,689
August 2020	10,829	9,919	910	7.0	376.00	6,719
July 2020	10,436	9,050	1,386	8.1	368.20	6,319
7/20 - 9/20	33,360	30,508	2,852	7.6	374.50	20,726
7/19 - 9/19	24,324	22,228	2,096	8.9	363.45	18,488

¹ Benefit days--average benefit days per registration period. Benefit per week--equal to 5 times average daily benefit.

² In accordance with the Balanced Budget and Emergency Deficit Control Act of 1985, as amended, amounts reflect a reduction of 6.8% under sequestration for days of unemployment and sickness after September 30, 2015, 6.9% for days after September 30, 2016, 6.6% for days after September 30, 2017, 6.2% for days after September 30, 2018, and 5.9% for days after September 30, 2019.

NOTE --Beginning in May 2020, RUIA claimants have also been paid under the Coronavirus Aid, Relief, and Economic Security Act of 2020.

Special Extended Unemployment Benefits and Enhanced Benefits were paid to unemployment beneficiaries, and Waived Waiting Period Benefits were paid to unemployment and to sickness beneficiaries, as follows:

- In July 2020, \$2.5M to 1,800 beneficiaries, \$37.8M to 15,100 beneficiaries, and \$0.4M to 1,600 unemployment and \$0.3M to 1,200 sickness beneficiaries.
- In August 2020, \$1.6M to 1,200 beneficiaries, \$18.6M to 11,100 beneficiaries, and \$2.8M to 11,800 unemployment and \$1.0M to 4,500 sickness beneficiaries.
- In September 2020, \$1.1M to 900 beneficiaries, \$1.0M to 600 beneficiaries, and \$0.3M to 1,400 unemployment and \$0.4M to 1,800 sickness beneficiaries.

GENERAL NOTES --An unemployment claimant files only one APPLICATION for a benefit year. A sickness claimant files an APPLICATION at the beginning of each period of continuing sickness.

NORMAL BENEFIT ACCOUNTS are opened when the first payment is made.

The number of BENEFICIARIES is the count of persons receiving unemployment or sickness benefits in the period. Those receiving both normal and extended benefits for unemployment or sickness are counted only once in the total for each type.

PAYMENTS generally cover 14-day registration periods. Benefits are payable for days over 7 during an employee's first 14-day registration period.

-- Sickness benefits are paid for days of sickness after the 4th consecutive day of sickness in the first claim in each period of continuing sickness; for subsequent registration periods in the same period of continuing sickness, payments are made for all days of sickness over 4 whether or not consecutive.

-- Unemployment benefits are paid for days of unemployment over 4. However, in the case of unemployment benefits due to a legal authorized strike, unemployment benefits are not paid until after a 14-day waiting period. Non-strikers unemployed due to an illegal strike must also serve a 14-day waiting period.

Table 4: Benefits and Beneficiaries -- September 2020
--

RETIREMENT - SURVIVOR

Total benefit payments - cash basis (unaudited)¹	\$1,096,457,000
Regular and Supplemental benefits	1,095,394,000
Vested dual benefits	1,063,000

	Number	Average
Total benefits being paid at end of month	623,000
Retired employees':		
Regular	256,000	\$2,906
Supplemental	114,000	42
Spouses' and divorced spouses'	147,000	1,088
Aged widows' and widowers'	79,000	1,840
Other benefits	26,000	1,169
Total beneficiaries being paid at end of month	499,000

UNEMPLOYMENT - SICKNESS

	Unemployment	Sickness
Gross benefit payments¹	\$13,474,000	\$7,689,000
Beneficiaries	9,500	5,500
Average payment per week¹	\$376	\$375

¹ In accordance with the Balanced Budget and Emergency Deficit Control Act of 1985, as amended, amounts reflect a reduction of 6.6% under sequestration for days of unemployment and sickness after September 30, 2017, 6.2% for days after September 30, 2018, and 5.9% for days after September 30, 2019.

-- Note: Beginning in May 2020, RUIA claimants have also been paid under the Coronavirus Aid, Relief, and Economic Security Act of 2020. In September 2020, the gross amount paid was \$2.9 million.