

## **Section C -- Unemployment and Sickness Benefits**

This section presents data on unemployment and sickness benefits paid to qualified railroad employees under the Railroad Unemployment Insurance Act (RUIA). Railroad unemployment and sickness benefits, by law, are based on a July-June benefit year. Therefore, railroad unemployment and sickness insurance benefit operations are presented on a benefit year basis, rather than on a fiscal year basis.

Normal benefits of each type may be paid for as many as 130 days in a period of 26 or more weeks but may not exceed the total creditable base year compensation of the beneficiary. After exhaustion of normal benefits, an employee with 10 or more years of railroad service may receive additional benefits in an extended benefit period provided he/she has not voluntarily retired, has not left work without good cause (for unemployment benefits only), and is less than 65 years old (for sickness benefits only). Extended benefits are paid in a 13-week period.

The American Recovery and Reinvestment Act of 2009 (Recovery Act), enacted February 17, 2009, authorized payment of special extended unemployment benefits to railroad employees with jobless claims during the period from July 1, 2008, to June 30, 2009. Key provisions related to railroad unemployment benefits included the following:

- Railroad employees who previously were not eligible for extended unemployment benefits because they did not have 10 years of railroad service were eligible for up to 65 days within an extended period consisting of 7 consecutive 2-week registration periods.
- Railroad employees who were previously eligible for extended unemployment benefits of up to 65 days were eligible for extended benefits of up to 130 days within an extended period consisting of 13 consecutive 2-week registration periods.
- The special extended unemployment benefit periods had to begin no later than December 31, 2009.

Enacted on November 6, 2009, the Worker, Homeownership and Business Assistance Act of 2009 contained an appropriation of \$175,000,000 to extend the provisions of the Recovery Act by one year. The Tax Relief, Unemployment Insurance Reauthorization, and Job Creation Act of 2010 (enacted December 17, 2010), the Temporary Payroll Tax Cut Continuation Act of 2011 (enacted December 23, 2011), the Middle Class Tax Relief and Job Creation Act of 2012 (enacted February 22, 2012), and the American Taxpayer Relief Act of 2012 (enacted January 2, 2013) each continued the special unemployment benefit provision for periods ranging from two months to one year, for a total extension of three years. Benefits had to begin by December 31, 2013.

An employee was qualified for benefit year 2016-2017 if in the preceding calendar (base) year his(her) compensation for railroad work, excluding earnings over \$1,455 a month, was \$3,637.50 or more. Additionally, if the employee was a new entrant to the industry in the base year, he(she) must have had at least five months of service in that year. For a long-service employee (one with 10 or more years of railroad service) a benefit year could be started early if he(she) was not currently qualified but would be qualified for the next benefit year. Also, an extended benefit period could continue beyond the usual June 30 ending date of a benefit year and thus extend the duration of the employee's benefit year. Therefore, the tables in this section on payments for unemployment and sickness that occurred during the July 2016 - June 2017 period include benefits that technically were payable in extensions of the 2015-2016 benefit year or accelerations of the 2017-2018 benefit year as well as those payable for the general benefit year (2016-2017).

Table C1 shows the principal figures for operations in benefit year 2016-2017 and other recent years. Figures in this table refer to payments made and other administrative actions taken under the unemployment and sickness programs during the designated benefit year. Table C2 provides various unemployment and sickness benefit and beneficiary data for benefit years 1987-1988 through 2016-2017. Tables C3 through C7 contain benefit data for unemployment and sickness which occurred in claim periods paid during the particular benefit years stated in the table headings or to which reference is made in the footnotes. Table C8 is a graph of unemployment and sickness beneficiaries by month for benefit year 2016-2017. Table C9 shows the distribution of experience based contribution rates, by number of employers, for 2017.

Payments for maternity under a separate program were discontinued by amendments adopted in 1968. However, provision was made for payment of sickness benefits to female employees prevented from working because of pregnancy or childbirth. The sickness benefit data in this section include such payments.

The unemployment and sickness beneficiary tables for benefit year 2016-2017 include all payments made by June 30, 2017. Benefits are paid for compensable days of unemployment or sickness at a daily rate equal to 60 percent of the employee's last daily rate of pay in the base year, subject to a \$72.00 maximum and a \$12.70 minimum in benefit year 2016-2017.

In accordance with the Balanced Budget and Emergency Deficit Control Act of 1985, as amended by the Budget Control Act of 2011, unemployment and sickness benefit amounts reflect a reduction of 9.2% under sequestration for days of unemployment and sickness after February 28, 2013, a reduction of 7.2% for days after September 30, 2013, 7.3% for days after September 30, 2014, 6.8% for days after September 30, 2015, and 6.9% for days after September 30, 2016.

The most important qualifications of the data for each table are shown in footnotes to the table.

**Table C1.-- Principal administrative data for the unemployment and sickness benefit programs,  
benefit years 2012-2013 through 2016-2017, cash basis**

Item	2012-2013	2013-2014	2014-2015	2015-2016	2016-2017
<b>Qualified employees.....</b>	243,800	247,600	248,200	254,200	260,700
<b>Maximum daily benefit rate.....</b>	\$66	\$68	\$70	\$72	\$72
<b>UNEMPLOYMENT BENEFITS<sup>1</sup></b>					
<b>Net amount of benefits paid (thousands)<sup>2</sup></b>	\$47,174	\$39,867	\$30,752	\$71,655	\$53,859
<b>Payments:<sup>3</sup></b>					
<b>Number.....</b>	83,500	69,700	52,100	112,300	90,000
<b>Average amount per two week     claim period.....</b>	\$557	\$550	\$578	\$591	\$594
<b>Beneficiaries.....</b>	10,700	10,000	7,600	16,400	13,200
<b>Applications received.....</b>	14,500	13,100	11,500	24,100	16,800
<b>Claims received.....</b>	96,000	82,900	62,500	137,000	108,100
<b>Normal benefit accounts exhausted.....</b>	2,500	2,300	1,900	3,300	3,100
<b>Non-compensable waiting period only<sup>4</sup>..</b>	(5)	(5)	(5)	(5)	(5)
<b>SICKNESS BENEFITS<sup>1</sup></b>					
<b>Net amount of benefits paid (thousands)<sup>2</sup></b>	\$43,394	\$45,316	\$48,428	\$54,511	\$59,824
<b>Payments:<sup>3</sup></b>					
<b>Number.....</b>	102,500	101,100	102,700	109,700	114,400
<b>Average amount per two week     claim period.....</b>	\$571	\$555	\$572	\$592	\$597
<b>Beneficiaries.....</b>	15,800	15,600	15,500	16,000	16,100
<b>Applications received.....</b>	19,400	19,100	19,400	19,800	20,100
<b>Claims received.....</b>	121,100	119,900	121,300	129,200	133,800
<b>Normal benefit accounts exhausted.....</b>	2,600	2,600	2,800	3,100	3,400
<b>Non-compensable waiting period only<sup>4</sup>..</b>	(5)	(5)	100	(5)	(5)

<sup>1</sup> In accordance with the Balanced Budget and Emergency Deficit Control Act of 1985, as amended by the Budget Control Act of 2011, amounts reflect a reduction of 9.2% under sequestration for days of unemployment and sickness after February 28, 2013, 7.2% for days after September 30, 2013, 7.3% for days after September 30, 2014, 6.8% for days after September 30, 2015, and 6.9% for days after September 30, 2016.

<sup>2</sup> Data provided by the Bureau of Fiscal Operations.

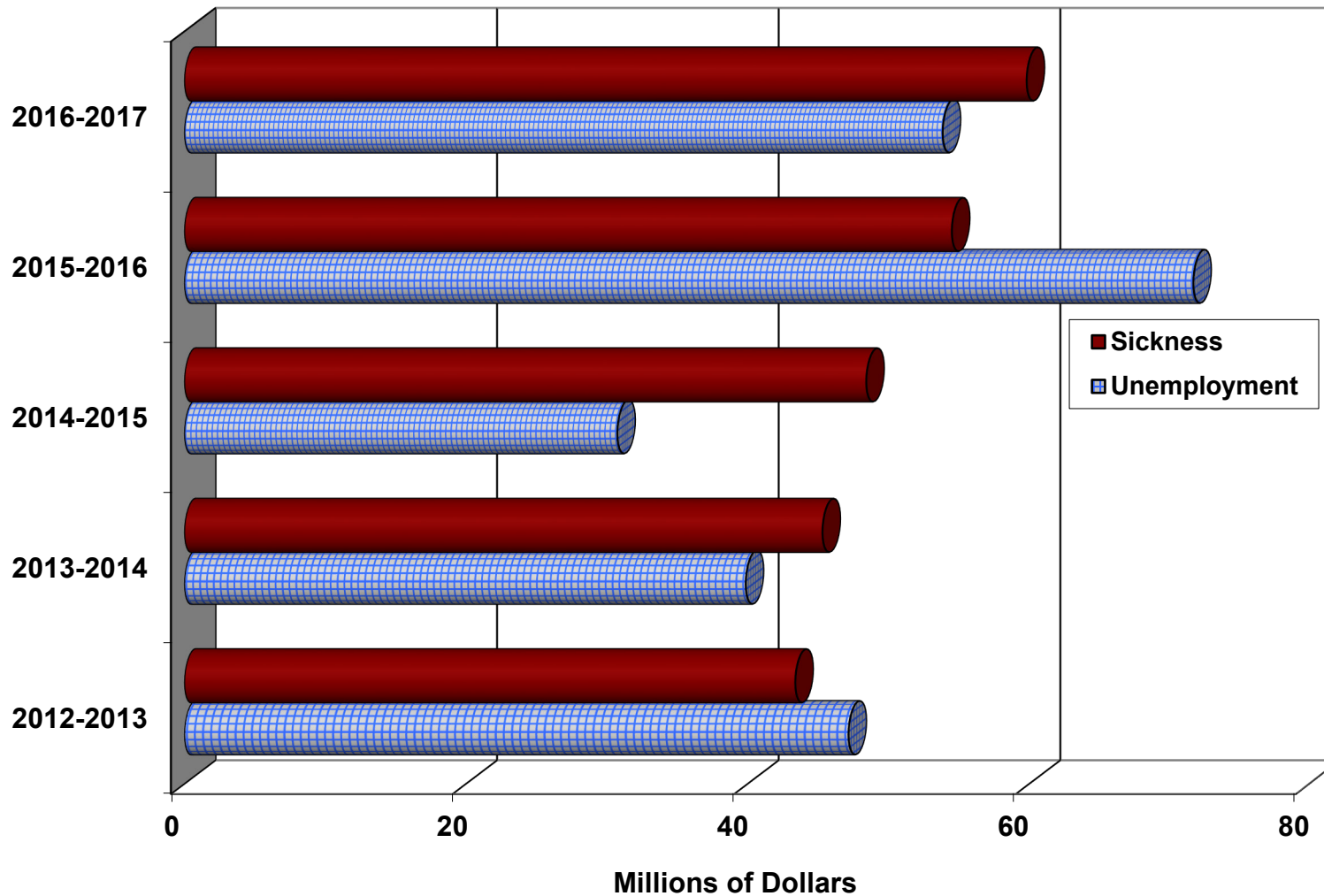
<sup>3</sup> Not adjusted for recoveries or settlements of underpayments.

<sup>4</sup> Benefits are payable for each day of unemployment or sickness in excess of 7 during the first 14-day registration period in a benefit year.

<sup>5</sup> Less than 50.

NOTE.--Data covered program activities during the year, regardless of when unemployment or sickness occurred. Starting in June 2009, includes temporary extended unemployment benefits authorized by the American Recovery and Reinvestment Act of 2009, the Worker, Homeownership, and Business Assistance Act of 2009, the Tax Relief, Unemployment Insurance Reauthorization, and Job Creation Act of 2010, the Temporary Payroll Tax Cut Continuation Act of 2011, the Middle Class Tax Relief and Job Creation Act of 2012 and the American Taxpayer Relief Act of 2012. Benefits had to begin by December 31, 2013. Net benefits for these temporary payments were \$6,868,000 in 2012-2013, \$2,391,000 in 2013-2014, -\$327,000 in 2014-2015, -\$212,000 in 2015-2016, and -\$167,000 in 2016-2017.

**Figure C1.--Net benefits under the Railroad Unemployment Insurance Act, benefit years 2012-2013 through 2016-2017, cash basis**



Starting in June 2009, includes temporary extended unemployment benefits authorized by the the American Recovery and Reinvestment Act of 2009, the Worker, Homeownership, and Business Assistance Act of 2009, the Tax Relief, Unemployment Insurance Reauthorization, and Job Creation Act of 2010, the Temporary Payroll Tax Cut Continuation Act of 2011, the Middle Class Tax Relief and Job Creation Act of 2012, and the American Taxpayer Relief Act of 2012. Benefits had to begin by December 31, 2013.

In accordance with the Balanced Budget and Emergency Deficit Control Act of 1985, as amended by the Budget Control Act of 2011, amounts reflect a reduction of 9.2% under sequestration for days of unemployment and sickness after February 28, 2013, a reduction of 7.2% for days after September 30, 2013, 7.3% for days after September 30, 2014, 6.8% for days after September 30, 2015, and 6.9% for days after September 30, 2016.

**Table C2.--Unemployment and sickness beneficiaries, benefit averages, and related data, by benefit year, 1987-1988 through 2016-2017**

Year	Number of beneficiaries	Amount of gross benefits (thousands)	Beneficiaries per 100 qualified employees	Benefit exhaustions per 100 beneficiaries	Average per beneficiary				
					Creditable registration periods	Compensable days	Daily benefit	Amount of benefits	
								Total for year	Total per week <sup>1</sup>
<b>UNEMPLOYMENT</b>									
1987-1988.....	54,400	\$84,938	14	18	7.5	63	\$24.72	\$1,561	\$123.60
1988-1989.....	35,200	59,047	10	15	7.0	59	28.29	1,679	141.45
1989-1990.....	29,900	57,488	9	17	7.5	64	30.14	1,921	150.70
1990-1991.....	30,500	63,315	9	18	7.9	67	30.85	2,078	154.25
1991-1992.....	26,400	<sup>2</sup> 62,185	8	21	8.7	76	30.94	2,353	154.70
1992-1993.....	20,700	<sup>2</sup> 51,150	7	19	8.5	75	32.82	2,466	164.10
1993-1994.....	18,600	44,016	6	16	8.1	71	32.94	2,348	164.70
1994-1995.....	18,700	39,670	6	15	6.8	59	35.73	2,120	178.65
1995-1996.....	16,800	42,263	6	19	7.8	69	35.86	2,461	179.30
1996-1997.....	15,300	40,228	5	18	7.2	63	40.57	2,564	202.85
1997-1998.....	11,300	30,175	4	18	6.9	60	42.78	2,571	213.90
1998-1999.....	12,600	35,354	5	16	7.0	62	43.81	2,719	219.05
1999-2000.....	13,700	38,317	5	13	6.9	61	45.51	2,759	227.56
2000-2001.....	16,700	46,120	6	13	6.6	57	47.81	2,736	239.05
2001-2002.....	17,800	51,398	7	14	6.7	58	49.62	2,862	248.08
2002-2003.....	15,400	49,563	6	17	7.1	62	51.45	3,182	257.27
2003-2004.....	11,700	41,315	5	19	7.4	64	54.38	3,503	271.89
2004-2005.....	9,300	34,394	4	21	7.4	66	55.27	3,633	276.34
2005-2006.....	8,900	30,478	4	18	6.9	61	55.27	3,393	276.35
2006-2007.....	9,500	32,529	4	17	6.8	60	56.29	3,398	281.47
2007-2008.....	10,100	38,187	4	18	7.2	64	58.40	3,732	292.01
2008-2009.....	21,400	<sup>3</sup> 82,572	8	13	7.4	63	60.66	3,846	303.32
2009-2010.....	24,800	<sup>3</sup> 142,609	10	30	10.3	90	63.43	5,715	317.14
2010-2011.....	11,600	<sup>3</sup> 55,623	5	24	8.4	73	65.23	4,742	326.15
2011-2012.....	9,200	<sup>3</sup> 45,562	4	24	8.6	75	65.22	4,921	326.12
2012-2013 <sup>4</sup> .....	10,700	<sup>3</sup> 51,648	4	23	8.6	75	63.98	4,792	319.89
2013-2014 <sup>4</sup> .....	10,000	<sup>3</sup> 42,946	4	23	7.8	69	62.36	4,286	311.79
2014-2015 <sup>4</sup> .....	7,600	<sup>3</sup> 33,873	3	25	7.7	69	64.66	4,451	323.31
2015-2016 <sup>4</sup> .....	16,400	<sup>3</sup> 75,337	6	19	7.7	68	66.88	4,576	334.41
2016-2017 <sup>4</sup> .....	13,200	59,888	5	23	7.6	67	66.94	4,518	334.72

See footnotes at end of table.

**Table C2.--Unemployment and sickness beneficiaries, benefit averages, and related data, by benefit year, 1987-1988 through 2016-2017 - Continued**

Year	Number of beneficiaries	Amount of gross benefits (thousands)	Beneficiaries per 100 qualified employees	Benefit exhaustions per 100 beneficiaries	Average per beneficiary				
					Creditable registration periods	Compensable days	Daily benefit	Amount of benefits	
								Total for year	Total per week <sup>1</sup>
<b>SICKNESS</b>									
1987-1988.....	41,700	\$66,809	11	18	6.9	65	\$24.74	\$1,602	\$123.70
1988-1989.....	33,700	62,115	9	19	7.1	67	27.63	1,845	138.15
1989-1990.....	28,200	58,337	8	20	7.2	68	30.24	2,068	151.20
1990-1991.....	25,600	54,528	8	21	7.4	69	30.81	2,133	154.05
1991-1992.....	23,600	52,666	7	21	7.7	72	30.97	2,232	154.85
1992-1993.....	21,800	50,693	7	20	7.6	71	32.80	2,323	164.00
1993-1994.....	21,600	50,613	7	16	7.5	71	32.98	2,328	164.90
1994-1995.....	21,000	54,006	7	20	7.7	72	35.74	2,573	178.70
1995-1996.....	20,400	55,437	7	21	7.9	74	35.94	2,652	179.70
1996-1997.....	20,500	60,566	7	21	7.6	70	40.18	2,825	200.90
1997-1998.....	20,500	63,356	7	18	7.7	69	42.90	2,967	214.50
1998-1999.....	20,600	64,203	8	16	7.6	68	43.91	2,999	219.55
1999-2000.....	22,000	69,992	8	17	7.8	69	45.75	3,152	228.73
2000-2001.....	23,000	78,584	8	19	7.9	71	47.88	3,388	239.42
2001-2002.....	23,000	84,125	9	21	8.2	73	49.85	3,629	249.25
2002-2003.....	22,400	83,690	9	19	8.0	71	51.83	3,701	259.17
2003-2004.....	21,600	83,718	9	19	7.9	70	54.80	3,848	274.02
2004-2005.....	20,200	78,547	8	18	7.8	69	55.89	3,855	279.46
2005-2006.....	19,700	76,041	8	17	7.7	69	55.93	3,835	279.63
2006-2007.....	19,000	73,140	8	17	7.6	67	56.83	3,814	284.17
2007-2008.....	18,400	72,336	7	17	7.5	66	58.76	3,896	293.78
2008-2009.....	17,600	71,704	7	17	7.5	67	60.69	4,040	303.45
2009-2010.....	17,800	76,991	7	17	7.6	68	63.62	4,298	318.11
2010-2011.....	17,400	77,555	7	17	7.6	68	65.66	4,441	328.28
2011-2012.....	16,700	74,457	7	17	7.5	67	65.77	4,413	328.85
2012-2013 <sup>4</sup> .....	15,800	66,743	6	16	7.4	65	64.50	4,202	322.48
2013-2014 <sup>4</sup> .....	15,600	64,075	6	16	7.4	65	63.09	4,100	315.46
2014-2015 <sup>4</sup> .....	15,500	66,950	6	17	7.5	66	65.44	4,314	327.20
2015-2016 <sup>4</sup> .....	16,000	73,892	6	19	7.8	69	67.49	4,626	337.45
2016-2017 <sup>4</sup> .....	16,000	77,075	6	20	8.0	71	67.63	4,797	338.14

See footnotes at end of table.

**Table C2.--Unemployment and sickness beneficiaries, benefit averages, and related data, by benefit year, 1987-1988 through 2016-2017 - Continued**

---

<sup>1</sup> Benefit for full week of unemployment or sickness.

<sup>2</sup> Includes benefits under Title V of the Emergency Unemployment Compensation Act of 1991, as amended, which provided extended unemployment benefits to claimants with less than 10 years of service and additional extended benefits to those with 10-14 years.

<sup>3</sup> Includes benefits under the American Recovery and Reinvestment Act of 2009, and the Worker, Homeownership and Business Assistance Act of 2009, as amended, which provided extended unemployment benefits to claimants with less than 10 years of service and additional extended benefits to those with 10 or more years of service. Benefits had to begin by December 31, 2013.

<sup>4</sup> In accordance with the Balanced Budget and Emergency Deficit Control Act of 1985, as amended by the Budget Control Act of 2011, amounts reflect a reduction of 9.2% under sequestration for days of unemployment and sickness after February 28, 2013, a reduction of 7.2% for days after September 30, 2013, 7.3% for days after September 30, 2014, 6.8% for days after September 30, 2015, and 6.9% after September 30, 2016.

NOTE.--Data include all unemployment and sickness in claims periods begun in the year. For this reason, and because adjustments of benefit amounts have occurred after tabulating cutoff dates, the total amounts of benefits differ substantially from the figures in Tables A1 and C1.

**Table C3.--Unemployment and sickness beneficiaries in benefit year 2016-2017 and selected data, by completed years of service**

Completed years of service	Beneficiaries		Average per beneficiary		
	Total	Per 100 qualified employees	Compensable days on benefit rolls	Daily benefit <sup>1</sup>	Amount of benefits for year <sup>1</sup>
<b>UNEMPLOYMENT</b>					
Under 10.....	9,430	7	63	\$66.99	\$4,223
10-14.....	1,762	4	82	66.98	5,470
15 and over.....	2,002	2	76	66.72	5,069
<b>Total.....</b>	<b>13,194</b>	<b>5</b>	<b>67</b>	<b>\$66.94</b>	<b>\$4,518</b>
<b>SICKNESS</b>					
Under 10.....	6,497	5	61	\$67.26	\$4,093
10-14.....	2,857	7	75	67.56	5,059
15 and over.....	6,698	8	79	67.93	5,369
<b>Total.....</b>	<b>16,052</b>	<b>6</b>	<b>71</b>	<b>\$67.63</b>	<b>\$4,797</b>

<sup>1</sup> In accordance with the Balanced Budget and Emergency Deficit Control Act of 1985, as amended by the Budget Control Act of 2011, amounts reflect a reduction of 7.2% for days after September 30, 2013, a reduction of 7.3% for days after September 30, 2014, 6.8% for days after September 30, 2015, and 6.9% for days after September 30, 2016.



**Table C4.--Unemployment and sickness beneficiaries, and total gross benefits for the year,  
by state, benefit year 2016-2017**

States	Unemployment benefits		Sickness benefits	
	Beneficiaries	Total amount <sup>1</sup>	Beneficiaries	Total amount <sup>1</sup>
Alabama.....	347	\$1,735,000	247	\$1,264,000
Alaska.....	48	332,000	6	30,000
Arizona.....	184	900,000	169	855,000
Arkansas.....	231	1,074,000	262	1,412,000
California.....	475	2,482,000	1,068	5,535,000
Colorado.....	205	861,000	175	857,000
Connecticut.....	30	161,000	113	555,000
Delaware.....	42	224,000	135	621,000
Washington DC.....	7	33,000	18	100,000
Florida.....	312	1,549,000	312	1,482,000
Georgia.....	617	2,890,000	488	2,376,000
Hawaii.....	2	1,000	.....	.....
Idaho.....	122	394,000	90	421,000
Illinois.....	1,136	5,655,000	1,335	6,224,000
Indiana.....	498	2,139,000	677	3,117,000
Iowa.....	257	1,024,000	269	1,186,000
Kansas.....	283	1,173,000	270	1,149,000
Kentucky.....	373	1,885,000	431	2,689,000
Louisiana.....	233	1,137,000	249	1,288,000
Maine.....	55	218,000	45	190,000
Maryland.....	142	636,000	346	1,610,000
Massachusetts.....	99	532,000	258	1,313,000
Michigan.....	231	936,000	306	1,467,000
Minnesota.....	420	1,617,000	314	1,384,000
Mississippi.....	155	671,000	130	593,000
Missouri.....	615	2,665,000	466	2,091,000
Montana.....	345	1,101,000	146	670,000
Nebraska.....	412	1,625,000	824	3,122,000
Nevada.....	46	186,000	44	212,000
New Hampshire.....	11	54,000	34	139,000
New Jersey.....	167	845,000	796	3,394,000

See footnotes at end of table.

**Table C4.--Unemployment and sickness beneficiaries, and total gross benefits for the year,  
by state, benefit year 2016-2017 - Continued**

States	Unemployment benefits		Sickness benefits	
	Beneficiaries	Total amount <sup>1</sup>	Beneficiaries	Total amount <sup>1</sup>
<b>New Mexico</b> .....	126	\$598,000	110	\$525,000
<b>New York</b> .....	436	\$2,144,000	710	\$3,597,000
<b>North Carolina</b> .....	199	1,070,000	213	1,043,000
<b>North Dakota</b> .....	153	573,000	110	477,000
<b>Ohio</b> .....	573	2,520,000	645	3,236,000
<b>Oklahoma</b> .....	128	544,000	87	447,000
<b>Oregon</b> .....	149	544,000	171	846,000
<b>Pennsylvania</b> .....	478	2,267,000	936	4,418,000
<b>Rhode Island</b> .....	11	64,000	49	270,000
<b>South Carolina</b> .....	191	979,000	142	831,000
<b>South Dakota</b> .....	51	173,000	37	156,000
<b>Tennessee</b> .....	368	1,536,000	375	1,978,000
<b>Texas</b> .....	896	4,610,000	833	3,730,000
<b>Utah</b> .....	97	486,000	101	421,000
<b>Vermont</b> .....	7	24,000	6	26,000
<b>Virginia</b> .....	271	1,231,000	403	2,245,000
<b>Washington</b> .....	234	866,000	338	1,572,000
<b>West Virginia</b> .....	254	1,164,000	237	1,448,000
<b>Wisconsin</b> .....	332	1,164,000	310	1,402,000
<b>Wyoming</b> .....	137	573,000	194	978,000
<b>Total<sup>2</sup></b> .....	13,194	\$59,888,000	16,052	\$77,075,000

<sup>1</sup> In accordance with the Balanced Budget and Emergency Deficit Control Act of 1985, as amended by the Budget Control Act of 2011, amounts reflect a reduction of 7.2% under sequestration for days of unemployment and sickness after September 30, 2013, a reduction of 7.3% for days after September 30, 2014, 6.8% for days after September 30, 2015, and 6.9% for days after September 30, 2016.

<sup>2</sup> Includes beneficiaries whose state of residence was unknown.

NOTE.--Detail may not add to totals due to rounding.

Data is partly estimated.

**Table C5.--Beneficiaries and selected averages for benefit year 2016-2017 unemployment, by age and sex**

Age on birthday in 2016	Number of beneficiaries				Average per beneficiary		
	Total	Female	Qualified employees	Per 100 qualified employees	Compensable days of unemployment	Daily benefit <sup>1</sup>	Amount of benefits for year <sup>1</sup>
<b>Under 25</b> .....	419	13	6,600	6	58	\$66.41	\$3,820
<b>25 to 29</b> .....	1,857	75	23,100	8	62	67.07	4,190
<b>30 to 34</b> .....	2,316	99	32,800	7	63	67.15	4,213
<b>35 to 39</b> .....	2,289	111	36,000	6	66	67.12	4,433
<b>40 to 44</b> .....	1,863	104	35,000	5	67	67.11	4,477
<b>45 to 49</b> .....	1,625	106	35,300	5	74	67.12	4,958
<b>50 to 54</b> .....	1,158	88	29,300	4	73	66.77	4,862
<b>55 to 59</b> .....	977	99	31,400	3	74	66.37	4,918
<b>60 to 64</b> .....	588	56	24,400	2	78	66.44	5,183
<b>65 to 69</b> .....	94	5	5,400	2	70	64.83	4,518
<b>70 and older</b> .....	8	1	900	1	54	47.56	2,545
<b>ALL BENEFICIARIES</b>							
<b>Male</b> .....	12,437	.....	236,400	5	67	\$66.97	\$4,477
<b>Female</b> .....	757	757	24,000	3	78	\$66.55	\$5,191
<b>Total</b> <sup>2</sup> .....	13,194	757	260,700	5	67	\$66.94	\$4,518

<sup>1</sup> In accordance with the Balanced Budget and Emergency Deficit Control Act of 1985, as amended by the Budget Control Act of 2011, amounts reflect a reduction of 7.2% under sequestration for days of unemployment and sickness after September 30, 2013, 7.3% for days after September 30, 2014, 6.8% for days after September 30, 2015, and 6.9% for days after September 30, 2016.

<sup>2</sup> Includes employees whose sex and/or age was not reported.

NOTE.-- Beneficiary figures based on payments made in the year, regardless of the benefit year for which payment was made. Qualified employees for 2016-2017 benefit year are those qualified on the basis of 2015 compensation.

**Table C6.--Beneficiaries and selected averages for benefit year 2016-2017 sickness, by age and sex**

Age on birthday in 2016	Number of beneficiaries				Average per beneficiary		
	Total	Female	Qualified employees	Per 100 qualified employees	Compensable days of sickness	Daily benefit <sup>1</sup>	Amount of benefits for year <sup>1</sup>
<b>Under 25</b> .....	84	7	6,600	1	47	\$66.45	\$3,097
<b>25 to 29</b> .....	637	112	23,100	3	55	66.93	3,675
<b>30 to 34</b> .....	1,317	223	32,800	4	57	67.36	3,843
<b>35 to 39</b> .....	1,798	238	36,000	5	62	67.49	4,216
<b>40 to 44</b> .....	1,989	208	35,000	6	67	67.53	4,531
<b>45 to 49</b> .....	2,300	219	35,300	7	72	67.48	4,875
<b>50 to 54</b> .....	2,206	269	29,300	8	73	67.76	4,931
<b>55 to 59</b> .....	2,795	279	31,400	9	80	67.94	5,407
<b>60 to 64</b> .....	2,415	225	24,400	10	80	68.32	5,479
<b>65 to 69</b> .....	469	69	5,400	9	73	65.56	4,761
<b>70 and older</b> .....	42	8	900	4	48	40.56	1,927
<b>ALL BENEFICIARIES</b>							
<b>Male</b> .....	14,195	.....	236,400	6	71	\$67.67	\$4,834
<b>Female</b> .....	1,857	1,857	24,000	8	67	\$67.27	\$4,516
<b>Total</b> <sup>2</sup> .....	16,052	1,857	260,700	6	71	\$67.63	\$4,797

<sup>1</sup> In accordance with the Balanced Budget and Emergency Deficit Control Act of 1985, as amended by the Budget Control Act of 2011, amounts reflect a reduction of 7.2% under sequestration for days of unemployment and sickness after September 30, 2013, 7.3% for days after September 30, 2014, 6.8% for days after September 30, 2015, and 6.9% for days after September 30, 2016.

<sup>2</sup> Includes employees whose sex and/or age was not reported.

NOTE.-- Beneficiary figures based on payments made in the year, regardless of the benefit year for which payment was made. Qualified employees for 2016-2017 benefit year are those qualified on the basis of 2015 compensation.

**Table C7.--Beneficiaries and average compensable days for benefit year 2016-2017 sickness, by type of sickness**

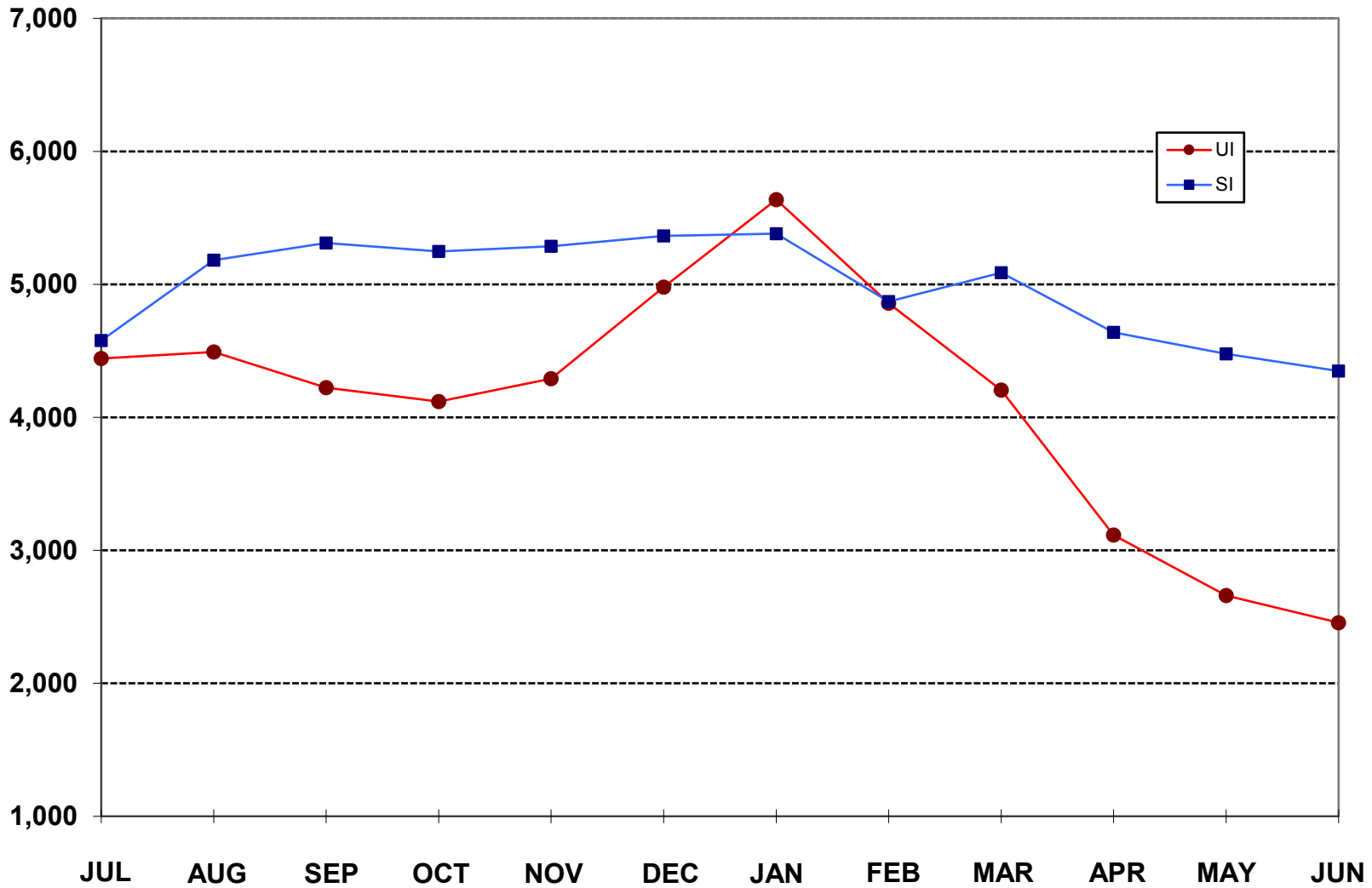
International list number	Type of sickness	Beneficiaries	Average compensable days of sickness
A00-B99	Infective and parasitic diseases .....	51	49
C00-D48	Neoplasms.....	762	70
E00-90	Endocrine, nutritional and metabolic diseases and immunity disorders.....	243	73
D50-89	Diseases of the blood and blood forming organs.....	18	90
F00-99	Mental disorders.....	1,881	74
G00-H95	Diseases of the nervous system and sense organs.....	758	77
I00-99	Diseases of the circulatory system.....	1,060	75
J00-99	Diseases of the respiratory system.....	411	53
K00-93	Diseases of the digestive system.....	1,019	37
N00-99	Diseases of the genitourinary system.....	212	60
O00-P96	Pregnancy, childbirth, and the puerperium, total <sup>1</sup> .....	254	42
L00-99	Diseases of the skin and subcutaneous tissue.....	166	48
M00-99	Diseases of the musculoskeletal system and connective tissue.....	3,557	89
Q00-99	Congenital anomalies.....	127	61
R00-69	Symptoms and ill-defined conditions.....	1,180	72
S00-T98, } V01-Y98 }	Injury and complications of poisoning.....	4,353	66
Total.....		16,052	71

<sup>1</sup> Includes normal periods of pregnancy and the puerperium in addition to morbidities included in the classifications numbered O00-P96.

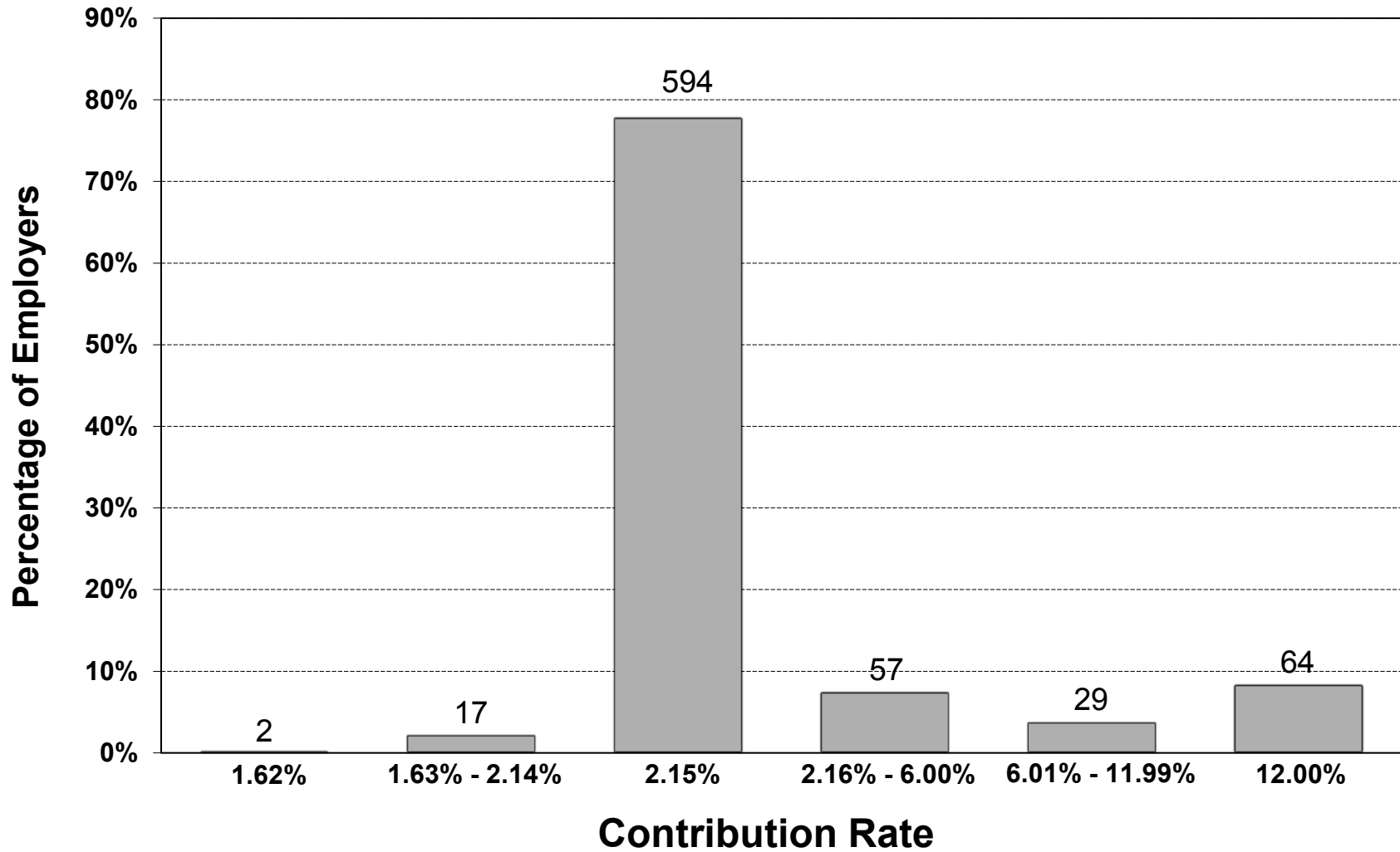
NOTE.--Type of sickness is determined by the first sickness for which payment was made. Classification by sickness group is in accordance with The International Classification of Diseases, Clinical Modification (ICD-10-CM), United States Government.

**Figure C8. -- UI & SI Beneficiaries  
By Month for Benefit Year 2016-2017**

**Beneficiaries**



**Figure C9. -- Experience Rating Distribution, 2017**



Number of employers is displayed above each bar.