

Section C -- Unemployment and Sickness Benefits

This section presents data on unemployment and sickness benefits paid to qualified railroad employees under the Railroad Unemployment Insurance Act (RUIA). Railroad unemployment and sickness benefits, by law, are based on a July-June benefit year. Therefore, railroad unemployment and sickness insurance benefit operations are presented on a benefit year basis, rather than on a fiscal year basis.

Normal benefits of each type may be paid for as many as 130 days in a period of 26 or more weeks but may not exceed the total creditable base year compensation of the beneficiary. After exhaustion of normal benefits, an employee with 10 or more years of railroad service may receive additional benefits in an extended benefit period provided he/she has not voluntarily retired, has not left work without good cause (for unemployment benefits only), and is less than 65 years old (for sickness benefits only). Extended benefits are paid in a 13-week period.

The American Recovery and Reinvestment Act of 2009 (Recovery Act), enacted February 17, 2009, authorized payment of special extended unemployment benefits to railroad employees with jobless claims during the period from July 1, 2008, to June 30, 2009. Key provisions related to railroad unemployment benefits included the following:

- Railroad employees who previously were not eligible for extended unemployment benefits because they did not have 10 years of railroad service were eligible for up to 65 days within an extended period consisting of 7 consecutive 2-week registration periods.
- Railroad employees who were previously eligible for extended unemployment benefits of up to 65 days were eligible for extended benefits of up to 130 days within an extended period consisting of 13 consecutive 2-week registration periods.
- The special extended unemployment benefit periods had to begin no later than December 31, 2009.

Enacted on November 6, 2009, the Worker, Homeownership and Business Assistance Act of 2009 contained an appropriation of \$175,000,000 to extend the provisions of the Recovery Act by one year. The Tax Relief, Unemployment Insurance Reauthorization, and Job Creation Act of 2010 (enacted December 17, 2010), the Temporary Payroll Tax Cut Continuation Act of 2011 (enacted December 23, 2011), the Middle Class Tax Relief and Job Creation Act of 2012 (enacted February 22, 2012), and the American Taxpayer Relief Act of 2012 (enacted January 2, 2013) each continued the special unemployment benefit provision for periods ranging from two months to one year, for a total extension of three years. Benefits had to begin by December 31, 2013.

An employee was qualified for benefit year 2015-2016 if in the preceding calendar (base) year his(her) compensation for railroad work, excluding earnings over \$1,440 a month, was \$3,600.00 or more. Additionally, if the employee was a new entrant to the industry in the base year, he(she) must have had at least five months of service in that year. For a long-service employee (one with 10 or more years of railroad service) a benefit year could be started early if he(she) was not currently qualified but would be qualified for the next benefit year. Also, an extended benefit period could continue beyond the usual June 30 ending date of a benefit year and thus extend the duration of the employee's benefit year. Therefore, the tables in this section on payments for unemployment and sickness that occurred during the July 2015 - June 2016 period include benefits that technically were payable in extensions of the 2014-2015 benefit year or accelerations of the 2016-2017 benefit year as well as those payable for the general benefit year (2015-2016).

Table C1 shows the principal figures for operations in benefit year 2015-2016 and other recent years. Figures in this table refer to payments made and other administrative actions taken under the unemployment and sickness programs during the designated benefit year. Table C2 provides various unemployment and sickness benefit and beneficiary data for benefit years 1986-1987 through 2015-2016. Tables C3 through C7 contain benefit data for unemployment and sickness which occurred in claim periods paid during the particular benefit years stated in the table headings or to which reference is made in the footnotes. Table C8 is a graph of unemployment and sickness beneficiaries by month for benefit year 2015-2016. Table C9 shows the distribution of experience based contribution rates, by number of employers, for 2016.

Payments for maternity under a separate program were discontinued by amendments adopted in 1968. However, provision was made for payment of sickness benefits to female employees prevented from working because of pregnancy or childbirth. The sickness benefit data in this section include such payments.

The unemployment and sickness beneficiary tables for benefit year 2015-2016 include all payments made by June 30, 2016. Benefits are paid for compensable days of unemployment or sickness at a daily rate equal to 60 percent of the employee's last daily rate of pay in the base year, subject to a \$72.00 maximum and a \$12.70 minimum in benefit year 2015-2016.

In accordance with the Balanced Budget and Emergency Deficit Control Act of 1985, as amended by the Budget Control Act of 2011, unemployment and sickness benefit amounts reflect a reduction of 9.2% under sequestration for days of unemployment and sickness after February 28, 2013, a reduction of 7.2% for days after September 30, 2013, 7.3% for days after September 30, 2014, and 6.8% for days after September 30, 2015.

The most important qualifications of the data for each table are shown in footnotes to the table.

**Table C1.-- Principal administrative data for the unemployment and sickness benefit programs,
benefit years 2011-2012 through 2015-2016, cash basis**

Item	2011-2012	2012-2013 ¹	2013-2014 ¹	2014-2015 ¹	2015-2016 ¹
Qualified employees.....	235,100	243,800	247,600	248,200	254,200
Maximum daily benefit rate.....	\$66	\$66	\$68	\$70	\$72
UNEMPLOYMENT BENEFITS					
Net amount of benefits paid (thousands)²	\$40,691	\$47,174	\$39,867	\$30,752	\$71,655
Payments:³					
Number.....	71,800	83,500	69,700	52,100	112,300
Average amount per two week claim period.....	\$573	\$557	\$550	\$578	\$591
Beneficiaries.....	9,200	10,700	10,000	7,600	16,400
Applications received.....	12,300	14,500	13,100	11,500	24,100
Claims received.....	81,400	96,000	82,900	62,500	137,000
Normal benefit accounts exhausted.....	2,200	2,500	2,300	1,900	3,300
Non-compensable waiting period only⁴..	(⁵)	(⁵)	(⁵)	(⁵)	(⁵)
SICKNESS BENEFITS					
Net amount of benefits paid (thousands)²	\$49,056	\$43,394	\$45,316	\$48,428	\$54,511
Payments:³					
Number.....	112,200	102,500	101,100	102,700	109,700
Average amount per two week claim period.....	\$585	\$571	\$555	\$572	\$592
Beneficiaries.....	16,700	15,800	15,600	15,500	16,000
Applications received.....	20,600	19,400	19,100	19,400	19,800
Claims received.....	131,700	121,100	119,900	121,300	129,200
Normal benefit accounts exhausted.....	3,000	2,600	2,600	2,800	3,100
Non-compensable waiting period only⁴..	100	(⁵)	(⁵)	100	(⁵)

¹ In accordance with the Balanced Budget and Emergency Deficit Control Act of 1985, as amended by the Budget Control Act of 2011, amounts reflect a reduction of 9.2% under sequestration for days of unemployment and sickness after February 28, 2013, a reduction of 7.2% for days after September 30, 2013, 7.3% for days after September 30, 2014, and 6.8% for days after September 30, 2015.

² Data provided by the Bureau of Fiscal Operations.

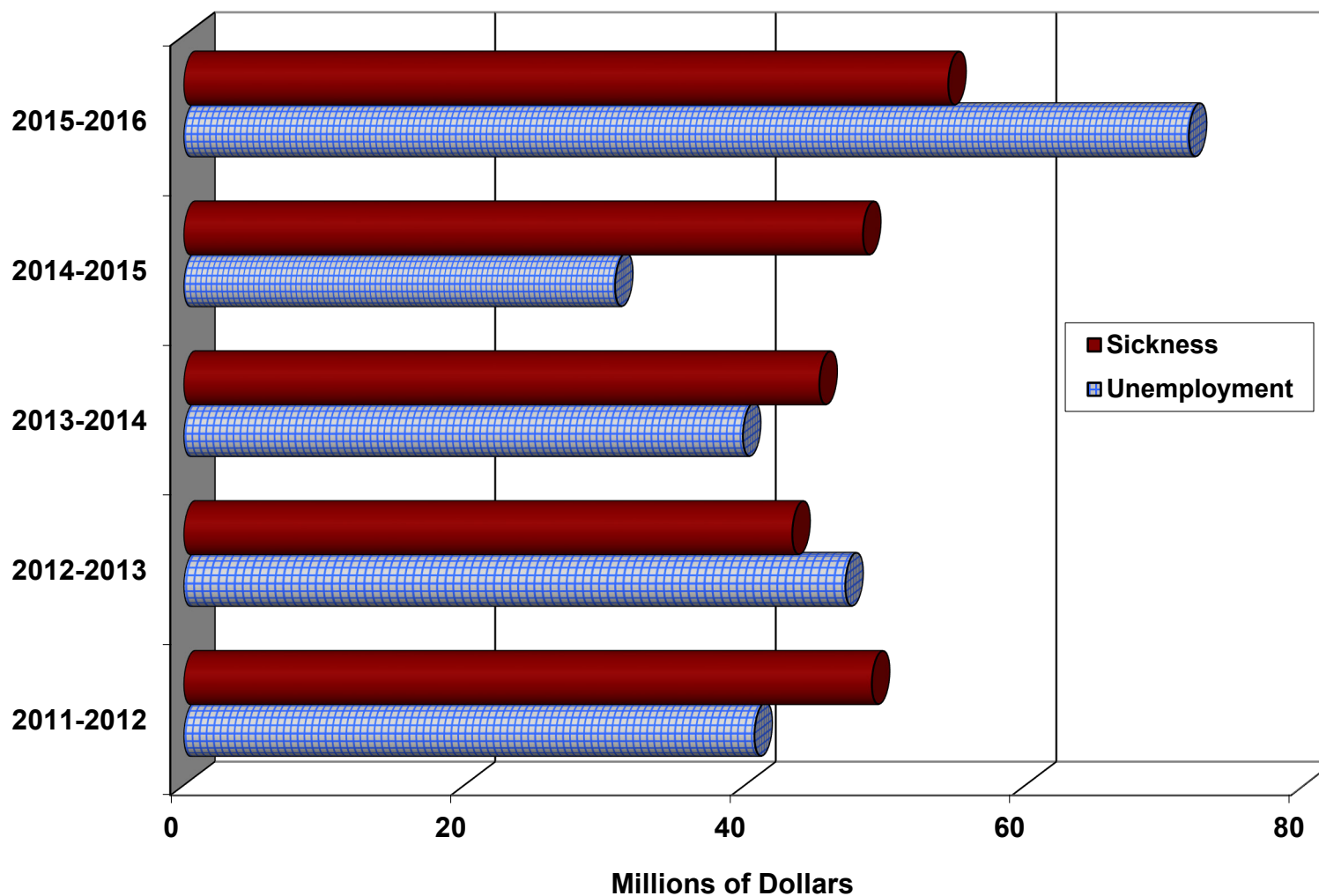
³ Not adjusted for recoveries or settlements of underpayments.

⁴ Benefits are payable for each day of unemployment or sickness in excess of 7 during the first 14-day registration period in a benefit year.

⁵ Less than 50.

NOTE.--Data covered program activities during the year, regardless of when unemployment or sickness occurred. Starting in June 2009, includes temporary extended unemployment benefits authorized by the American Recovery and Reinvestment Act of 2009, the Worker, Homeownership, and Business Assistance Act of 2009, the Tax Relief, Unemployment Insurance Reauthorization, and Job Creation Act of 2010, the Temporary Payroll Tax Cut Continuation Act of 2011, the Middle Class Tax Relief and Job Creation Act of 2012 and the American Taxpayer Relief Act of 2012. Benefits had to begin by December 31, 2013. Net benefits for these temporary payments were: \$7,011,000 in 2011-2012, \$6,868,000 in 2012-2013, \$2,391,000 in 2013-2014, -\$327,000 in 2014-2015, and -\$212,000 in 2015-2016.

Figure C1.--Net benefits under the Railroad Unemployment Insurance Act, benefit years 2011-2012 through 2015-2016, cash basis



Starting in June 2009, includes temporary extended unemployment benefits authorized by the the American Recovery and Reinvestment Act of 2009, the Worker, Homeownership, and Business Assistance Act of 2009, the Tax Relief, Unemployment Insurance Reauthorization, and Job Creation Act of 2010, the Temporary Payroll Tax Cut Continuation Act of 2011, the Middle Class Tax Relief and Job Creation Act of 2012, and the American Taxpayer Relief Act of 2012. Benefits had to begin by December 31, 2013.

In accordance with the Balanced Budget and Emergency Deficit Control Act of 1985, as amended by the Budget Control Act of 2011, amounts reflect a reduction of 9.2% under sequestration for days of unemployment and sickness after February 28, 2013, a reduction of 7.2% for days after September 30, 2013, 7.3% for days after September 30, 2014, and 6.8% for days after September 30, 2015.

Table C2.--Unemployment and sickness beneficiaries, benefit averages, and related data, by benefit year, 1986-1987 through 2015-2016

Year	Number of beneficiaries	Amount of gross benefits (thousands)	Beneficiaries per 100 qualified employees	Benefit exhaustions per 100 beneficiaries	Average per beneficiary				
					Creditable registration periods	Compensable days	Daily benefit	Amount of benefits	
								Total for year	Total per week
UNEMPLOYMENT									
1986-1987.....	75,200	\$127,235	18	8	8.2	68	\$24.72	\$1,693	\$123.60
1987-1988.....	54,400	84,938	14	18	7.5	63	24.72	1,561	123.60
1988-1989.....	35,200	59,047	10	15	7.0	59	28.29	1,679	141.45
1989-1990.....	29,900	57,488	9	17	7.5	64	30.14	1,921	150.70
1990-1991.....	30,500	63,315	9	18	7.9	67	30.85	2,078	154.25
1991-1992.....	26,400	¹ 62,185	8	21	8.7	76	30.94	2,353	154.70
1992-1993.....	20,700	¹ 51,150	7	19	8.5	75	32.82	2,466	164.10
1993-1994.....	18,600	44,016	6	16	8.1	71	32.94	2,348	164.70
1994-1995.....	18,700	39,670	6	15	6.8	59	35.73	2,120	178.65
1995-1996.....	16,800	42,263	6	19	7.8	69	35.86	2,461	179.30
1996-1997.....	15,300	40,228	5	18	7.2	63	40.57	2,564	202.85
1997-1998.....	11,300	30,175	4	18	6.9	60	42.78	2,571	213.90
1998-1999.....	12,600	35,354	5	16	7.0	62	43.81	2,719	219.05
1999-2000.....	13,700	38,317	5	13	6.9	61	45.51	2,759	227.56
2000-2001.....	16,700	46,120	6	13	6.6	57	47.81	2,736	239.05
2001-2002.....	17,800	51,398	7	14	6.7	58	49.62	2,862	248.08
2002-2003.....	15,400	49,563	6	17	7.1	62	51.45	3,182	257.27
2003-2004.....	11,700	41,315	5	19	7.4	64	54.38	3,503	271.89
2004-2005.....	9,300	34,394	4	21	7.4	66	55.27	3,633	276.34
2005-2006.....	8,900	30,478	4	18	6.9	61	55.27	3,393	276.35
2006-2007.....	9,500	32,529	4	17	6.8	60	56.29	3,398	281.47
2007-2008.....	10,100	38,187	4	18	7.2	64	58.40	3,732	292.01
2008-2009.....	21,400	² 82,572	8	13	7.4	63	60.66	3,846	303.32
2009-2010.....	24,800	² 142,609	10	30	10.3	90	63.43	5,715	317.14
2010-2011.....	11,600	² 55,623	5	24	8.4	73	65.23	4,742	326.15
2011-2012.....	9,200	² 45,562	4	24	8.6	75	65.22	4,921	326.12
2012-2013 ³	10,700	² 51,648	4	23	8.6	75	63.98	4,792	319.89
2013-2014 ³	10,000	² 42,946	4	23	7.8	69	62.36	4,286	311.79
2014-2015 ³	7,600	² 33,873	3	25	7.7	69	64.66	4,451	323.31
2015-2016 ³	16,400	² 75,337	6	19	7.7	68	66.88	4,576	334.41

See footnotes at end of table.

Table C2.--Unemployment and sickness beneficiaries, benefit averages, and related data, by benefit year, 1986-1987 through 2015-2016 - Continued

Year	Number of beneficiaries	Amount of gross benefits (thousands)	Beneficiaries per 100 qualified employees	Benefit exhaustions per 100 beneficiaries	Average per beneficiary				
					Creditable registration periods	Compensable days	Daily benefit	Amount of benefits	
								Total for year	Total per week
SICKNESS									
1986-1987.....	45,200	\$72,678	11	19	6.9	65	\$24.69	\$1,609	\$123.45
1987-1988.....	41,700	66,809	11	18	6.9	65	24.74	1,602	123.70
1988-1989.....	33,700	62,115	9	19	7.1	67	27.63	1,845	138.15
1989-1990.....	28,200	58,337	8	20	7.2	68	30.24	2,068	151.20
1990-1991.....	25,600	54,528	8	21	7.4	69	30.81	2,133	154.05
1991-1992.....	23,600	52,666	7	21	7.7	72	30.97	2,232	154.85
1992-1993.....	21,800	50,693	7	20	7.6	71	32.80	2,323	164.00
1993-1994.....	21,600	50,613	7	16	7.5	71	32.98	2,328	164.90
1994-1995.....	21,000	54,006	7	20	7.7	72	35.74	2,573	178.70
1995-1996.....	20,400	55,437	7	21	7.9	74	35.94	2,652	179.70
1996-1997.....	20,500	60,566	7	21	7.6	70	40.18	2,825	200.90
1997-1998.....	20,500	63,356	7	18	7.7	69	42.90	2,967	214.50
1998-1999.....	20,600	64,203	8	16	7.6	68	43.91	2,999	219.55
1999-2000.....	22,000	69,992	8	17	7.8	69	45.75	3,152	228.73
2000-2001.....	23,000	78,584	8	19	7.9	71	47.88	3,388	239.42
2001-2002.....	23,000	84,125	9	21	8.2	73	49.85	3,629	249.25
2002-2003.....	22,400	83,690	9	19	8.0	71	51.83	3,701	259.17
2003-2004.....	21,600	83,718	9	19	7.9	70	54.80	3,848	274.02
2004-2005.....	20,200	78,547	8	18	7.8	69	55.89	3,855	279.46
2005-2006.....	19,700	76,041	8	17	7.7	69	55.93	3,835	279.63
2006-2007.....	19,000	73,140	8	17	7.6	67	56.83	3,814	284.17
2007-2008.....	18,400	72,336	7	17	7.5	66	58.76	3,896	293.78
2008-2009.....	17,600	71,704	7	17	7.5	67	60.69	4,040	303.45
2009-2010.....	17,800	76,991	7	17	7.6	68	63.62	4,298	318.11
2010-2011.....	17,400	77,555	7	17	7.6	68	65.66	4,441	328.28
2011-2012.....	16,700	74,457	7	17	7.5	67	65.77	4,413	328.85
2012-2013 ³	15,800	66,743	6	16	7.4	65	64.50	4,202	322.48
2013-2014 ³	15,600	64,075	6	16	7.4	65	63.09	4,100	315.46
2014-2015 ³	15,500	66,950	6	17	7.5	66	65.44	4,314	327.20
2015-2016 ³	16,000	73,892	6	19	7.8	69	67.49	4,626	337.45

See footnotes at end of table.

Table C2.--Unemployment and sickness beneficiaries, benefit averages, and related data, by benefit year, 1986-1987 through 2015-2016 - Continued

¹ Compensable days data was first used in benefit year 1986-1987. Previous years' data refers to creditable days.

² Benefit for full week of unemployment or sickness.

³ Includes benefits under Title V of the Emergency Unemployment Compensation Act of 1991, as amended, which provided extended unemployment benefits to claimants with less than 10 years of service and additional extended benefits to those with 10-14 years.

⁴ Includes benefits under the American Recovery and Reinvestment Act of 2009, and the Worker, Homeownership and Business Assistance Act of 2009, as amended, which provided extended unemployment benefits to claimants with less than 10 years of service and additional extended benefits to those with 10 or more years of service. Benefits had to begin by December 31, 2013.

⁵ In accordance with the Balanced Budget and Emergency Deficit Control Act of 1985, as amended by the Budget Control Act of 2011, amounts reflect a reduction of 9.2% under sequestration for days of unemployment and sickness after February 28, 2013, a reduction of 7.2% for days after September 30, 2013, 7.3% for days after September 30, 2014, and 6.8% for days after September 30, 2015.

NOTE.--Data include all unemployment and sickness in claims periods begun in the year. For this reason, and because adjustments of benefit amounts have occurred after tabulating cutoff dates, the total amounts of benefits differ substantially from the figures in Tables A1 and C1. Beginning in benefit year 1986-1987 the table was compiled using different source materials than those used in previous years.

Table C3.--Unemployment and sickness beneficiaries in benefit year 2015-2016 and selected data, by completed years of service

Completed years of service	Beneficiaries		Average per beneficiary		
	Total	Per 100 qualified employees	Compensable days on benefit rolls	Daily benefit ¹	Amount of benefits for year ¹
UNEMPLOYMENT²					
Under 10.....	12,620	10	67	\$66.95	\$4,482
10-14.....	1,674	5	79	66.74	5,242
15 and over.....	2,126	2	69	66.60	4,610
Total.....	16,420	6	68	\$66.88	\$4,576
SICKNESS					
Under 10.....	6,669	5	59	\$67.18	\$3,978
10-14.....	2,565	7	73	67.03	4,864
15 and over.....	6,729	7	76	67.90	5,178
Total.....	15,963	6	69	\$67.49	\$4,626

¹ In accordance with the Balanced Budget and Emergency Deficit Control Act of 1985, as amended by the Budget Control Act of 2011, amounts reflect a reduction of 9.2% under sequestration for days of unemployment and sickness after February 28, 2013, a reduction of 7.2% for days after September 30, 2013, and 7.3% for days after September 30, 2014, and 6.8% for days after September 30, 2015.

² Includes temporary extended unemployment benefits authorized by the American Recovery and Reinvestment Act of 2009, and the the Worker, Homeownership, and Business Assistance Act of 2009, as amended. Benefits had to begin by December 31, 2013.

**Table C4.--Unemployment and sickness beneficiaries, and total gross benefits for the year,
by state, benefit year 2015-2016**

States	Unemployment benefits ¹		Sickness benefits	
	Beneficiaries	Total amount ²	Beneficiaries	Total amount ²
Alabama	372	\$1,886,000	251	\$1,177,000
Alaska	54	349,000	7	37,000
Arizona	286	1,215,000	175	853,000
Arkansas	363	1,660,000	259	1,200,000
California	608	2,994,000	1,012	4,698,000
Colorado	390	1,932,000	202	887,000
Connecticut	32	159,000	105	541,000
Delaware	29	169,000	116	507,000
Washington DC	6	38,000	14	104,000
Florida	301	1,488,000	346	1,533,000
Georgia	510	2,479,000	481	2,229,000
Hawaii	2	12,000
Idaho	147	584,000	100	493,000
Illinois	1,254	6,302,000	1,335	6,270,000
Indiana	552	2,376,000	682	3,181,000
Iowa	308	1,254,000	279	1,142,000
Kansas	484	2,183,000	281	1,049,000
Kentucky	518	2,275,000	436	2,323,000
Louisiana	269	1,313,000	252	1,326,000
Maine	65	303,000	35	165,000
Maryland	152	706,000	330	1,569,000
Massachusetts	82	440,000	243	990,000
Michigan	293	1,338,000	312	1,645,000
Minnesota	511	2,159,000	340	1,608,000
Mississippi	157	738,000	142	659,000
Missouri	841	3,695,000	486	1,995,000
Montana	427	1,804,000	133	569,000
Nebraska	666	2,752,000	823	3,031,000
Nevada	54	230,000	47	223,000
New Hampshire	8	32,000	30	158,000
New Jersey	157	752,000	768	3,221,000
New Mexico	188	795,000	92	489,000

See footnotes at end of table.

**Table C4.--Unemployment and sickness beneficiaries, and total gross benefits for the year,
by state, benefit year 2015-2016 - Continued**

States	Unemployment benefits ¹		Sickness benefits	
	Beneficiaries	Total amount ²	Beneficiaries	Total amount ²
New York	453	\$2,091,000	672	\$3,370,000
North Carolina	194	991,000	196	905,000
North Dakota	258	1,066,000	114	464,000
Ohio	696	3,002,000	624	3,054,000
Oklahoma	186	903,000	96	446,000
Oregon	163	737,000	154	727,000
Pennsylvania	513	2,364,000	950	4,603,000
Rhode Island	4	27,000	45	185,000
South Carolina	162	765,000	150	752,000
South Dakota	95	407,000	37	164,000
Tennessee	453	1,935,000	396	1,981,000
Texas	1,279	6,121,000	831	3,905,000
Utah	154	745,000	123	556,000
Vermont	9	36,000	5	30,000
Virginia	377	1,699,000	412	2,083,000
Washington	292	1,201,000	304	1,293,000
West Virginia	339	1,706,000	260	1,394,000
Wisconsin	399	1,752,000	306	1,321,000
Wyoming	306	1,364,000	168	771,000
Total ³	16,420	\$75,337,000	15,963	\$73,892,000

¹ Includes temporary extended unemployment benefits authorized by the American Recovery and Reinvestment Act of 2009, and the Worker, Homeownership, and Business Assistance Act of 2009, as amended. Benefits had to begin by December 31, 2013.

² In accordance with the Balanced Budget and Emergency Deficit Control Act of 1985, as amended by the Budget Control Act of 2011, amounts reflect a reduction of 9.2% under sequestration for days of unemployment and sickness after February 28, 2013, a reduction of 7.2% for days after September 30, 2013, and 7.3% for days after September 30, 2014, and 6.8% for days after September 30, 2015.

³ Includes beneficiaries whose state of residence was unknown.

NOTE.--Detail may not add to totals due to rounding.

Data is partly estimated.

Table C5.--Beneficiaries and selected averages for benefit year 2015-2016 unemployment, by age and sex

Age on birthday in 2015	Number of beneficiaries				Average per beneficiary		
	Total	Female	Qualified employees	Per 100 qualified employees	Compensable days of unemployment	Daily benefit ¹	Amount of benefits for year ¹
Under 25.....	748	20	6,100	12	72	\$66.65	\$4,765
25 to 29.....	2,553	91	21,300	12	70	67.03	4,663
30 to 34.....	3,097	96	30,700	10	66	67.06	4,424
35 to 39.....	2,839	114	33,900	8	67	67.14	4,517
40 to 44.....	2,147	107	34,800	6	70	66.96	4,665
45 to 49.....	1,937	132	33,100	6	69	66.74	4,574
50 to 54.....	1,338	114	29,100	5	68	66.77	4,545
55 to 59.....	1,048	108	34,000	3	70	66.69	4,669
60 to 64.....	596	39	25,200	2	73	66.11	4,819
65 to 69.....	106	12	5,100	2	57	63.33	3,615
70 and older.....	11	1	900	1	65	48.53	3,168
ALL BENEFICIARIES							
Male.....	15,586	230,500	7	68	\$66.91	\$4,536
Female.....	834	834	23,400	4	80	\$66.42	\$5,321
Total².....	16,420	834	254,200	6	68	\$66.88	\$4,576

¹ In accordance with the Balanced Budget and Emergency Deficit Control Act of 1985, as amended by the Budget Control Act of 2011, amounts reflect a reduction of 9.2% under sequestration for days of unemployment and sickness after February 28, 2013, a reduction of 7.2% for days after September 30, 2013, 7.3% for days after September 30, 2014, and 6.8% for days after September 30, 2015.

² Includes employees whose sex and/or age was not reported.

NOTE.-- Beneficiary figures based on payments made in the year, regardless of the benefit year for which payment was made. Qualified employees for 2015-2016 benefit year are those qualified on the basis of 2014 compensation. Includes temporary extended unemployment benefits authorized by the American Recovery and Reinvestment Act of 2009, and the Worker, Homeownership, and Business Assistance Act of 2009, as amended. Benefits had to begin by December 31, 2013.

Table C6.--Beneficiaries and selected averages for benefit year 2015-2016 sickness, by age and sex

Age on birthday in 2015	Number of beneficiaries				Average per beneficiary		
	Total	Female	Qualified employees	Per 100 qualified employees	Compensable days of sickness	Daily benefit ¹	Amount of benefits for year ¹
Under 25	89	7	6,100	1	55	\$66.30	\$3,616
25 to 29	667	120	21,300	3	54	67.19	3,605
30 to 34	1,315	239	30,700	4	54	67.23	3,623
35 to 39	1,805	258	33,900	5	60	67.18	4,031
40 to 44	1,974	202	34,800	6	64	67.31	4,304
45 to 49	2,151	232	33,100	7	69	67.46	4,632
50 to 54	2,133	281	29,100	7	71	67.34	4,776
55 to 59	2,939	299	34,000	9	76	67.92	5,167
60 to 64	2,421	234	25,200	10	80	68.24	5,468
65 to 69	425	57	5,100	8	69	64.37	4,443
70 and older	44	11	900	5	52	53.88	2,820
ALL BENEFICIARIES							
Male	14,023	230,500	6	69	\$67.54	\$4,656
Female	1,940	1,940	23,400	8	66	\$67.11	\$4,411
Total ²	15,963	1,940	254,200	6	69	\$67.49	\$4,626

¹ In accordance with the Balanced Budget and Emergency Deficit Control Act of 1985, as amended by the Budget Control Act of 2011, amounts reflect a reduction of 9.2% under sequestration for days of unemployment and sickness after February 28, 2013, a reduction of 7.2% for days after September 30, 2013, 7.3% for days after September 30, 2014, and 6.8% for days after September 30, 2015.

² Includes employees whose sex and/or age was not reported.

NOTE.-- Beneficiary figures based on payments made in the year, regardless of the benefit year for which payment was made. Qualified employees for 2015-2016 benefit year are those qualified on the basis of 2014 compensation.

Table C7.--Beneficiaries and average compensable days for benefit year 2015-2016 sickness, by type of sickness

International list number		Type of sickness	Beneficiaries	Average compensable days of sickness
9-CM	10-CM			
001-139	A00-B99	Infective and parasitic diseases	58	40
140-239	C00-D48	Neoplasms.....	755	68
240-279	E00-90	Endocrine, nutritional and metabolic diseases and immunity disorders.....	200	65
280-289	D50-89	Diseases of the blood and blood forming organs.....	16	47
290-319	F00-99	Mental disorders.....	1,883	71
320-389	G00-H95	Diseases of the nervous system and sense organs.....	727	75
390-459	I00-99	Diseases of the circulatory system.....	1,089	76
460-519	J00-99	Diseases of the respiratory system.....	337	53
520-579	K00-93	Diseases of the digestive system.....	965	35
580-629	N00-99	Diseases of the genitourinary system.....	209	52
630-679	O00-P96	Pregnancy, childbirth, and the puerperium, total ¹	276	43
680-709	L00-99	Diseases of the skin and subcutaneous tissue.....	144	53
710-739	M00-99	Diseases of the musculoskeletal system and connective tissue.....	3,403	89
740-759	Q00-99	Congenital anomalies.....	130	50
780-799	R00-69	Symptoms and ill-defined conditions.....	1,411	59
800-999	S00-T98, V01-Y98	Injury and complications of poisoning.....	4,360	64
Total.....			15,963	69

¹ Includes normal periods of pregnancy and the puerperium in addition to morbidities included in the classifications numbered 630-679, O00-P96.

NOTE.--Type of sickness is determined by the first sickness for which payment was made. Classification by sickness group is in accordance with The International Classification of Diseases, Clinical Modification (ICD-9-CM and ICD-10-CM), United States Government.

**Figure C8. -- UI & SI Beneficiaries
By Month for Benefit Year 2015-2016**

Beneficiaries

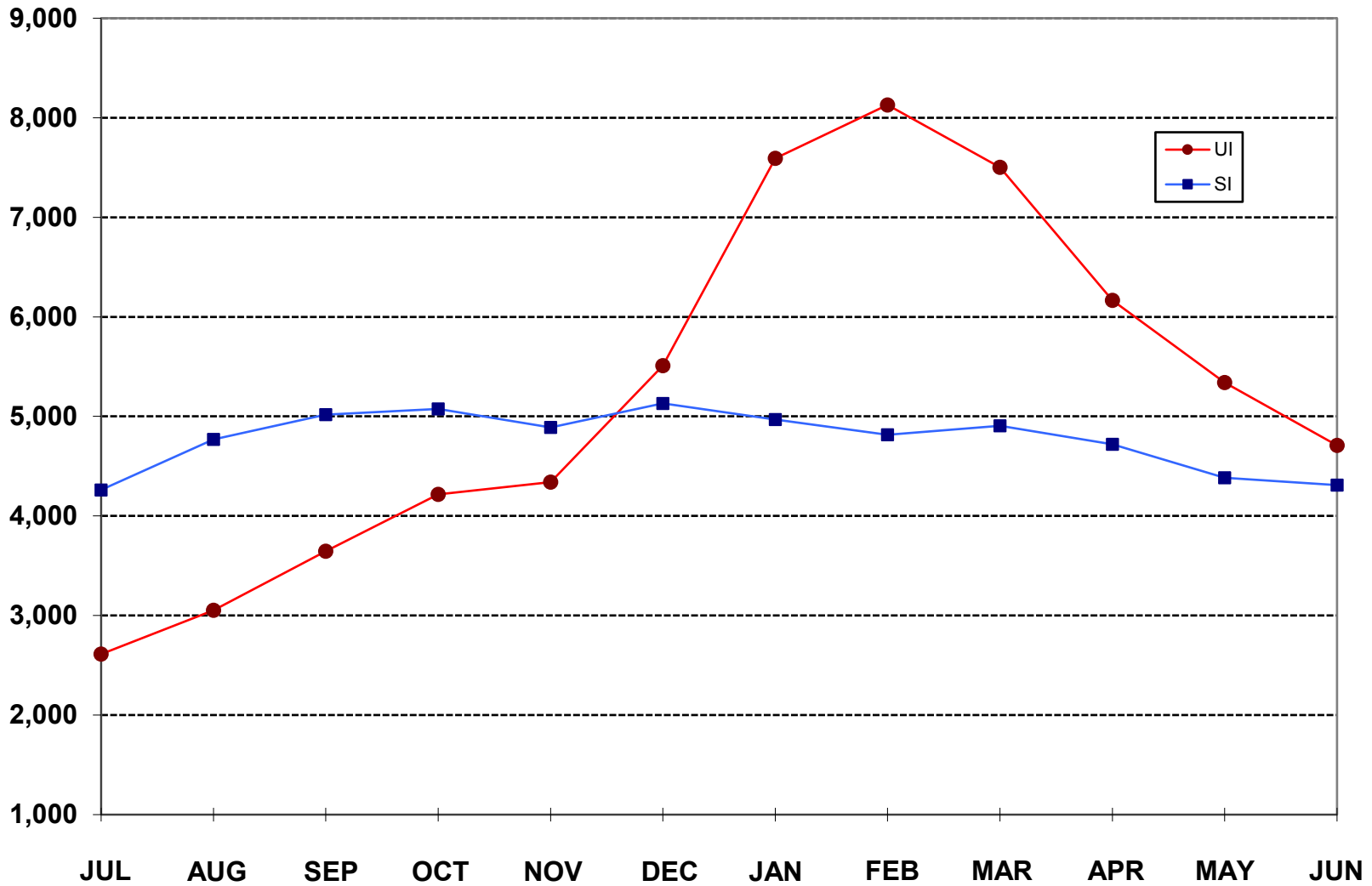
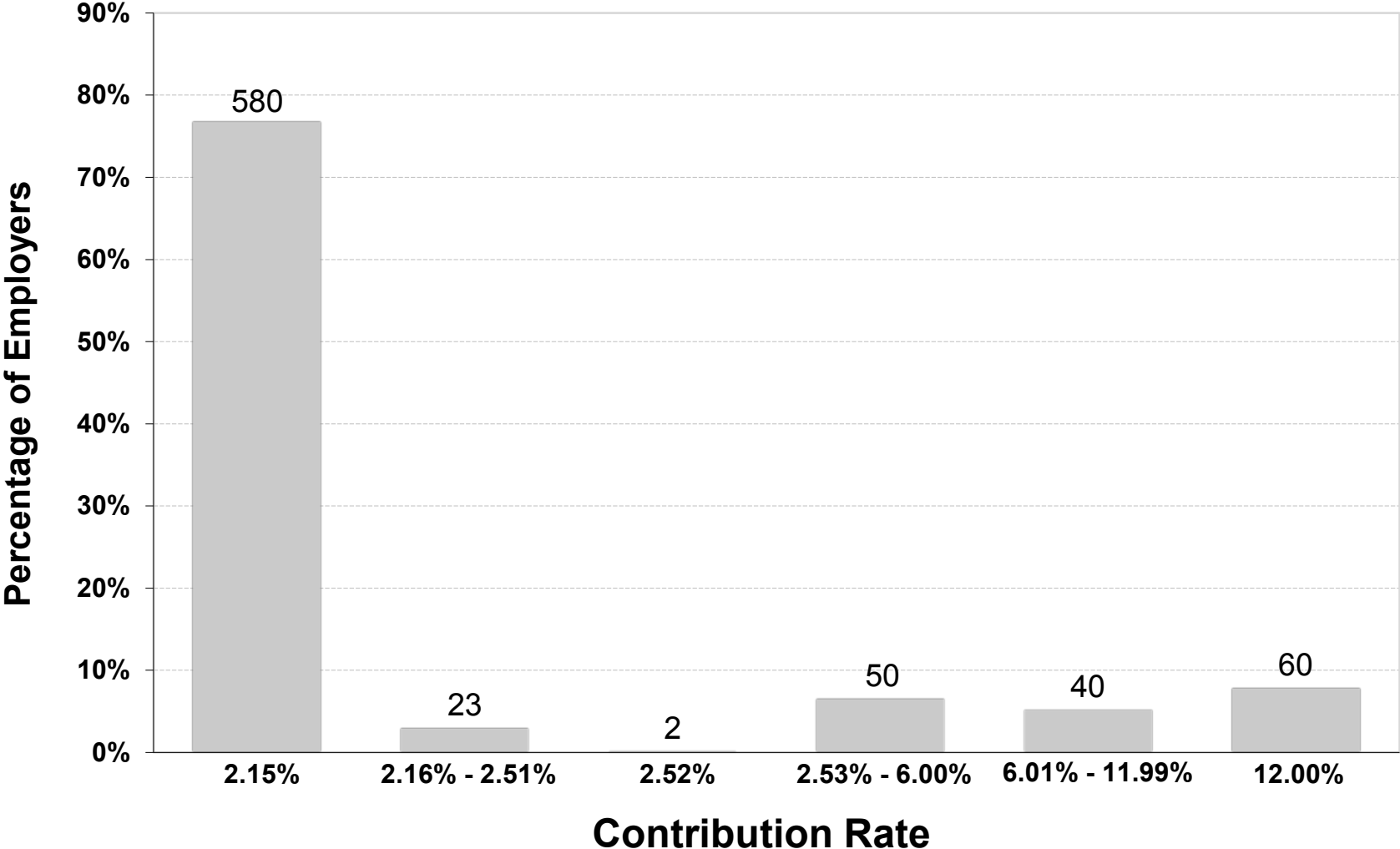


Figure C9. -- Experience Rating Distribution, 2016



Number of employers is displayed above each bar.